



HENRY GLASS

Every Heart Beats True

by Kim Diehl



Quilt size: 44 1/2" x 44 1/2"

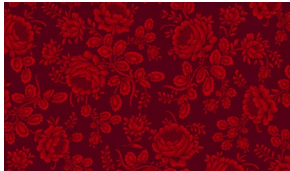
Hometown Parade Table Topper

Designed by Kim Diehl

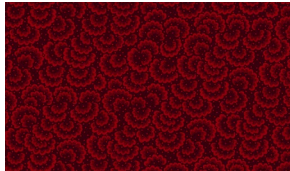
www.henryglassfabrics.net

Hometown Parade Table Topper Ordering Guide

SKU	Yards	Meters	6 Kits	12 Kits
2686-88	1/2 yds	0.46m	1 bolt	1 bolt
2687-88	7/8 yds	0.80m	1 bolt	1 bolt
2688-11	3/4 yds	0.69m	1 bolt	1 bolt
2689-77	1 yd	0.91m	1 bolt	1 bolt
2695-77	1/3 yds	0.30m	1 bolt	1 bolt
2697-44	5/8 yds	0.57m	1 bolt	1 bolt
2698-44	3/4 yds	0.69m	1 bolt	1 bolt
44" Backing Fabric Option				
2697-44	1 1/2 yds	1.37m	1 bolt	2 bolts
* Indicates binding fabric. FO = 18" x 22" (0.45m x 0.55m) All fabric quantities are based on 15yd bolts unless otherwise indicated.				



2686-88
Cabbage Roses
Cranberry



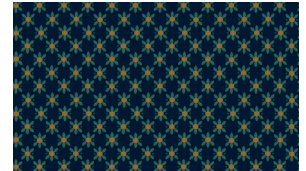
2687-88
Scalloped Crescents Monotone
Wine



2688-11
Stars and Stripes
Dusty Aqua



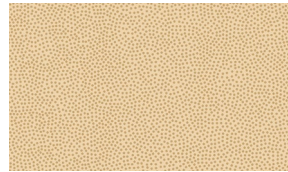
2689-77
Froth and Bubbles
Sapphire



2695-77
Cornflowers
Indigo



2697-44
Parchment Paper
Wheat



2698-44
Scattered Seeds
Wheat